



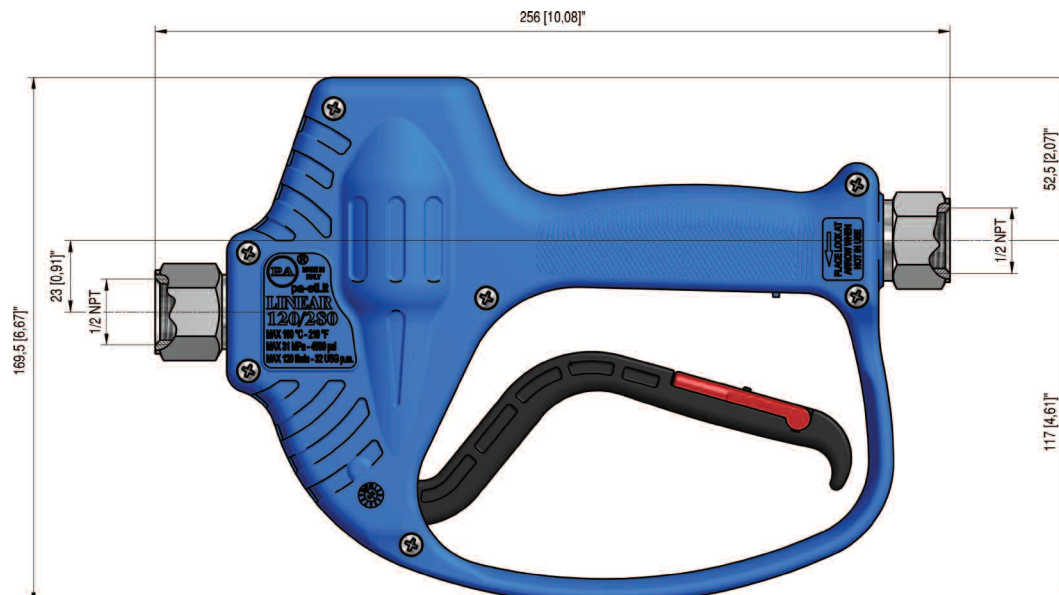
## FEATURES

- Shockproof plastic housing
- Ergonomic design
- Internal construction of brass and Stainless Steel
- Minimizes fatigue for the operator

## SPECIFICATIONS

<b>Part Number</b>	<b>YG4032S</b>
Maximum Volume	32 GPM
Rated Discharge Pressure	4,050 PSI
Maximum Discharge Pressure	4,500 PSI
Maximum Fluid Temperature	320°F
Inlet Port Thread	1/2" NPT-F
Discharge Port Thread	1/2" NPT-F
Weight	2.8 lbs
Dimensions	10.08" x 6.68" x 1.2"
Materials	Stainless Steel, Brass, Plastic, Viton

## DIMENSIONS



Ref 300944 Rev. C  
09-16

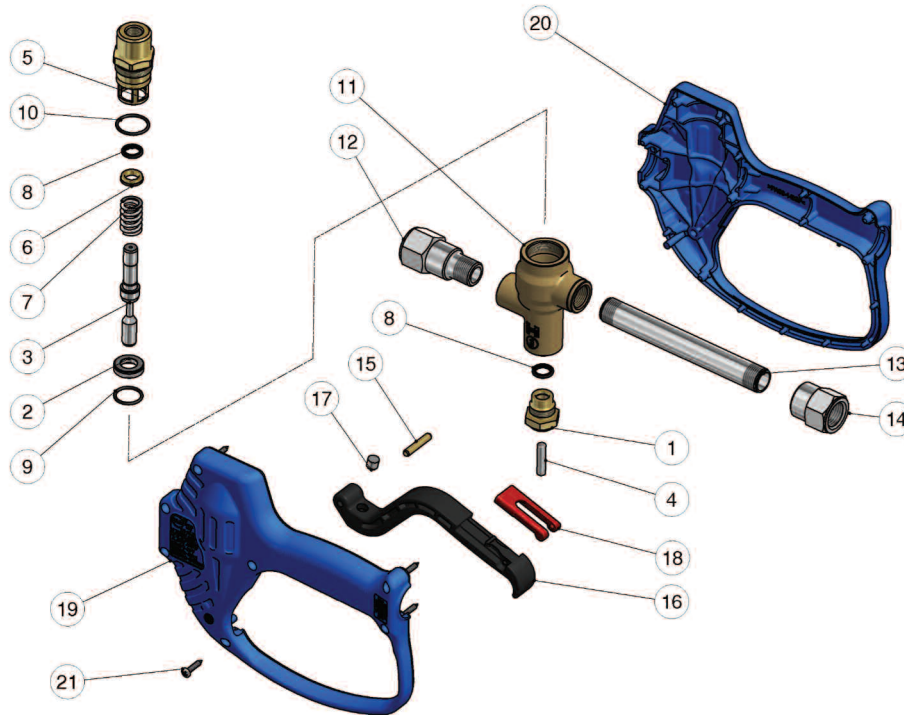
# YG4032S

**GENERAL PUMP**

A member of the Interpump Group

## Straight, Rear Entry Spray Gun

### PARTS LIST



No.	Part No.	Description	Qty.
1.	Y30403831	Front Plug, M18x1.5, Brass	1
2.*	Y30404524	Piston + Seal Kit	1
4.	Y30404151	Parallel SST Pin, 6x25.8 mm	1
5.	Y30403731	Spring Holder	1
6.	Y30404031	Spacer Ring, 10.1x15.8x3.8 mm, Brass	1
7.*	Y30404251	Spring, 2.4x15.3x30 mm, SST	1
8.*	Y10202700	Stem Seal, 10x15x2.2 mm, + O-ring	2
9.*	Y10306801	O-ring, 1.78x17.7 mm	1
10.*	Y10307201	O-ring, 1.78x20.35	1

\* Y30404624 Repair Kit, YG4032S

No.	Part No.	Description	Qty.
11.	Y30068135	Housing	1
12.	Y30065251	Coupling, 1/2" NPT-F, SST	1
13.	Y30510456	Tube, M18x1.5, SST	1
14.	Y30065351	Coupling, 1/2" NPT-F, SST	1
15.	Y30251731	Parallel Pin, 5x27.5 mm, Brass	1
16.	Y30530384	Trigger, Black	1
17.	Y30225551	Stop Pin, 8X7.5, SST	1
18.	Y30151084	Safety Latch, Red	1
19.	Y30068624	Casing Kit + SS Screws	1
21.	Y16307551	Self Tapping Screw, 3.5x18 mm, SST	7

### INSTRUCTIONS

This product is to be used with clean, fresh water. For use involving different or corrosive liquids, contact your GP's customer service department. Appropriate filtration should be installed when using unclean liquids. Choose the gun that most closely matches the rated pressure, max flow and max temperature of the pressure wash system. In any case, the pressure of the machine should not exceed the permissible pressure rate imprinted on the gun.

### INSTALLATION

This gun was designed to operate with hot water (in compliance with the technical specs), making sure not to exceed the max temperature. Always fit a safety valve to protect the system when the latter is under pressure. Choose a suitable nozzle and adjust the valve mounted in the front of the gun, thus obtaining a constant supply and avoiding unwanted pressure spikes. If the nozzle wears out, the pressure falls. When you install a new nozzle, adjust the system back to the original pressure.

### OPERATION

The gun opens and closes a high pressure conduct by means of a piston acting on a seat; the return is controlled by a spring which releases the trigger. Attention: during pump activation ALWAYS set the gun with its safety latch connected in order to prevent accidental openings.